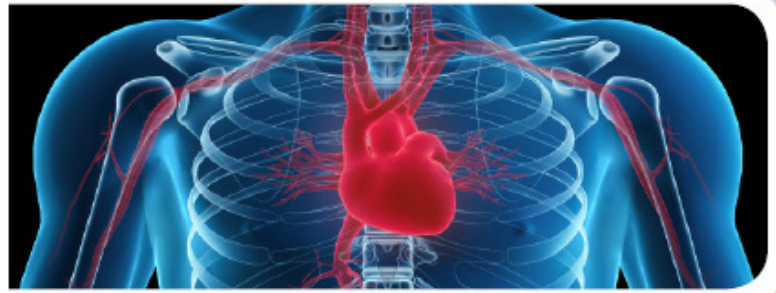


Certificate in Foundations Studies of Complementary Healthcare Products



2011 Course Outline

Certificate in Foundation Studies for Complementary Healthcare Products

The human body is one of the most fascinating subjects. Explore and understand the fundamental processes of cells and the processes of the major body systems: circulatory, respiratory, excretory, digestive, reproductive, musculoskeletal, nervous and hormonal.

Become more expert in the human body

Specifically designed for the complementary healthcare industry, the Certificate in Foundation Studies for Complementary Healthcare Products is an introductory course for people without a background in health sciences.

Learning Goals

- Gain a sound understanding of the body, from a cellular & tissue level, right the way up to how each individual body system works and the factors contributing to disease
- Understand foundations of the complementary healthcare industry and its regulation
- Gain foundation knowledge allowing for further learning of how nutritional supplements, herbal supplements and homeopathic & flower essences may impact the body systems
- Enhance your existing skills you bring to your role, providing greater job opportunity and laying the foundations to become a future leader of the industry

Career Opportunities

- A 'must do' course for people with aspirations in the complementary healthcare industry
- The skills gained upon graduation of this course will be of particular benefit to:
 - Complementary healthcare retailers & pharmacy assistants
 - People new to the complementary healthcare industry
 - Staff of industry businesses all of whom should have this level of working knowledge:
 - Sales and Marketing staff
 - Laboratory & product development staff
 - Office and Customer Service staff

Course Highlights

- Self paced on-line learning with easy to understand, printable modules.
- Email tutor assistance
- Stand alone certificate or as part of the Diploma of Complementary Healthcare Products

<http://moodle.chc.org.au>

Additional Course Information

Course Duration – Although designed to allow you to study at your own pace, it is expected to take students between 60-70 hours to complete this course depending on previous knowledge.

Study Mode – On-line with printable study notes

Entry requirements – Completion of application form on-line at <http://moodle.chc.org.au>. Students may seek recognition of prior learning (RPL) or recognition of current competency (RCC) where appropriate.

Assessments - Online assessment to be taken on satisfactory completion of all modules. The 100 true/false questions must be successfully completed to graduate from the certificate.

Cost

| Member | Member | Non Member |
|--|--------|------------|
| Individual Certificate Enrolment | \$480 | \$600 |
| 2 Certificate Package Enrolment | \$880 | \$1100 |
| Full Diploma (6 certificate) Enrolment | \$2600 | \$3200 |

* Where required Individual Modules can be purchased for \$60

EXPLORE THE COURSE CONTENT

| Module | Module Name | Module content |
|--------------|--|--|
| One | Introduction to the complementary healthcare products industry | Government Regulation of complementary medicines; Industry self-regulations of complementary medicines; Food regulation. |
| Two | How the body works; How body systems work Part 1 | Basic body chemistry; How cells work; How tissues work. Digestive and immune systems |
| Three | How body systems work Part 2 | Muscular system; Skin; Urinary system; Respiratory system |
| Four | How body systems work Part 3 | Skeletal system; Nervous system; Lymphatic System; Reproductive system |
| Five | How body systems work Part 4 | Cardiovascular system; Lymphatic system; Reproductive system |
| Six | What goes wrong in disease Part 1 | Factors that contribute to disease; Poor nutrition; Psychological or physical stress; Oxidative stress |
| Seven | What goes wrong with disease Part 2 | Inflammation; Infections; Hypersensitivity responses; Detoxification |

<http://moodle.chc.org.au>